

Stations and Chowda

March Fridays: 23, 30 (Good Friday)

5pm - 6pm

Pray the Stations
Outside or Inside!

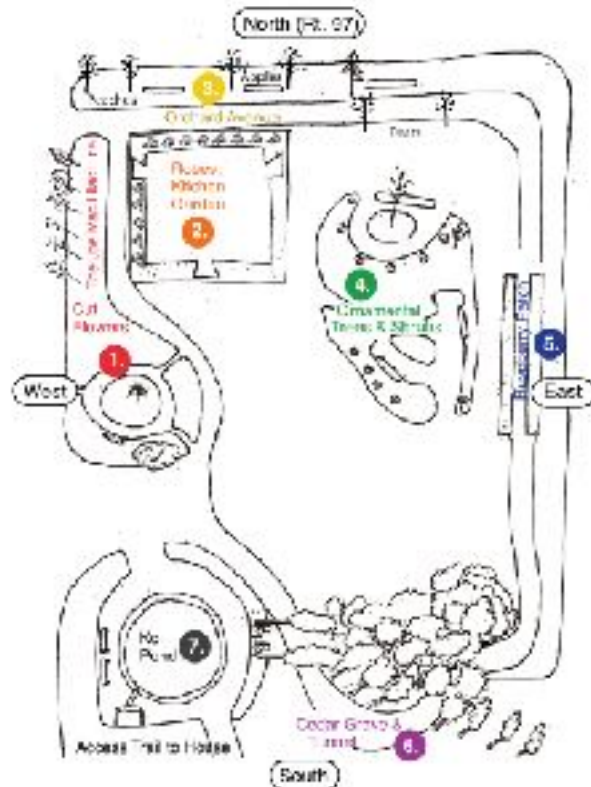
6pm - 7pm

Fellowship w/Friends
Eat (Fish) Chowda

All are welcome,
Free-of-charge.

At 202 Haverhill Road,
Topsfield, MA 01983, the
home & gardens of Mary
E. MacDonald & Karl R.
Ackerman, Rest.Stop.Ranch.
Information, Qs, or RSVP,
Call Mary: 978-887-4202

The MaryMac Front Garden Loop (0.1 mi)



People from any spiritual tradition, might enjoy the contemplative practice of walking or sitting “15 Stations: 6 Ways,” based on and including the Catholic tradition of praying the Stations of the Passion and Resurrection. Our outdoor stations are wheelchair-accessible. Each station offers an option to sit or kneel. A small Stations library offers over twenty spiritual authors who have found this spiritual practice inspirational.

If you are seeking greater peace, love, and healing, this practice and fellowship may offer you what you seek and possibly more. *Come with your heart open...*

updated 031818 by mary e. macdonald

